

NOMINAL FILTERS AND ADAPTERS

P/N 70002

10 micron particulate filter with draincock, 3/4" flow port, 18 GPM max flow.

P/N 70003

10 micron particulate filter without draincock, 3/4" flow port, 18 GPM max flow.



P/N 70003 shown

P/N 70061

Type 2 water absorption filter, 10 micron particulate, 1" flow port, 18 GPM max flow.

P/N 70062

Type 2 water absorption filter, 10 micron particulate, 3/4" flow port, 18 GPM max flow.

P/N 70067

Type 2 water absorption filter, 30 micron particulate, 3/4" flow port, 18 GPM max flow.

P/N 70064

Type 2 water absorption filter, 30 micron particulate, 3/4" flow port, 15 GPM max flow.



P/N 70061 shown

P/N 70004 shown



P/N 70004

10 micron particulate filter with draincock, 1" flow port, 18 GPM max flow.

P/N 70005

10 micron particulate filter without draincock, 1" flow port, 18 GPM max flow.



P/N 70063 shown

P/N 70019

10 micron particulate filter without draincock, 1/4" flow port, 40 GPM max flow.

P/N 70063

10 micron filter for water absorption, 1/4" flow port, 40 GPM max flow.

P/N 70068

30 micron filter for water absorption, 1/4" flow port, 40 GPM max flow.

P/N 50003

3/4" NPTF Cast Iron in line filter adapter (3/4" flow path)

P/N 50002

1" NPTF Cast Iron in line filter adapter (3/4" flow path)

P/N 50004

1" NPTF Cast Iron in line filter adapter (1" flow port)



P/N 50003 shown

P/N 50181

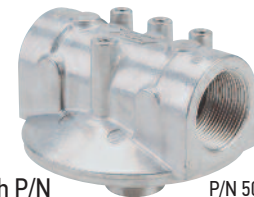
3/4" NPTF Aluminum in line filter adapter (3/4" flow port)

P/N 50109

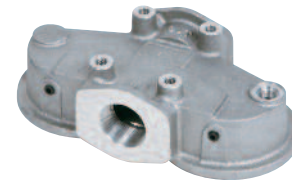
1" NPTF Aluminum in line filter adapter (1/4" flow port). For use with P/N 70019, 70063 and 70068 high flow filter elements.

P/N 50163

1/2" NPTF Aluminum in line filter adapter (1/4" flow path). For use with P/N 70019, 70063 and 70068 high flow filter elements.



P/N 50109 shown



P/N 71146

Dual element aluminum filter adapter with 50 PSI internal bypass. Has 1/2" NPTF threads for use with P/N 70019, 70063 and 70068 high flow filter elements. Filter head has differential ports available for installation of gauges and/or visual indicator to warn of dirty filters.

REFERENCE INFORMATION

Relative Sizes of Particles

Substance	Micron	Inches
Grain of table salt	100	.0039
Human hair	70	.0027
Lower limit visibility	40	.0016
Milled flour	25	.0010
Red blood cells	8	.0003
Bacteria	2	.0001