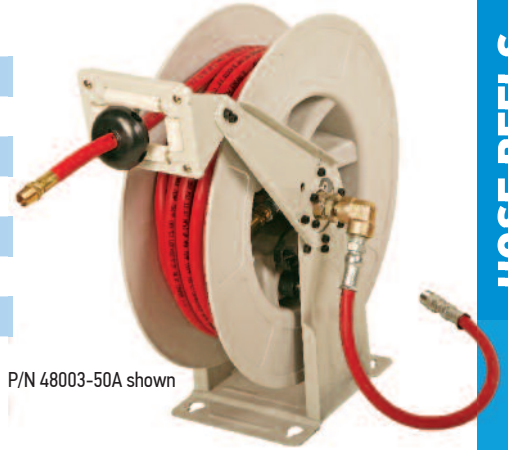


SPRING REWIND HOSE REELS – OPEN DRUM – AIR/WATER

Economy Air Reels, 48002 and 48003:



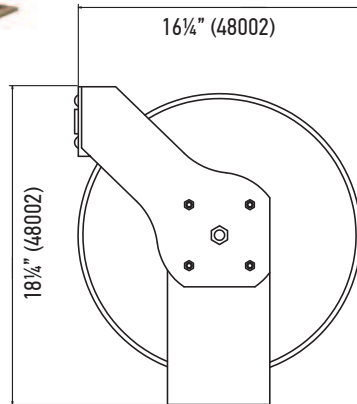
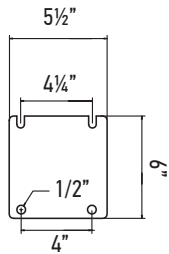
P/N 48002-50A shown



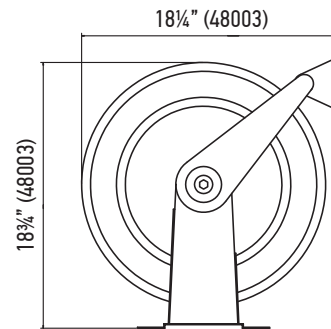
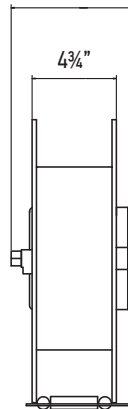
P/N 48003-50A shown

	P/N 48002-50A	P/N 48003-50A
Working Pressure	300 PSI	300 PSI
Hose Length	50 ft.	50 ft.
Hose Dia., ID	3/8"	3/8"
Inlet Connection	3/8" NPTF	3/8" NPTF
Outlet Connection	3/8" NPTM	3/8" NPTM
Connecting Hose Length	—	2 ft.
Shipping Weight, lb.	36	38

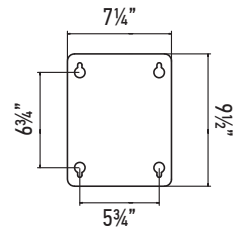
Mounting Pattern (48002)



7" (48002)
9 1/2" (48003)

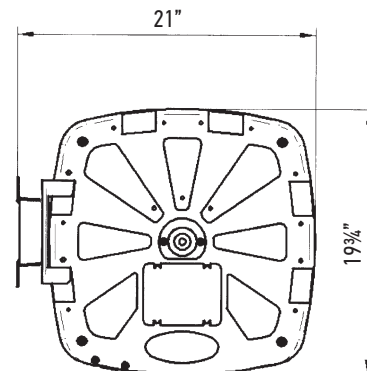
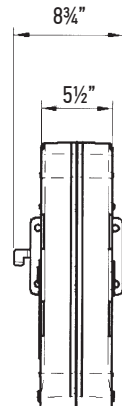
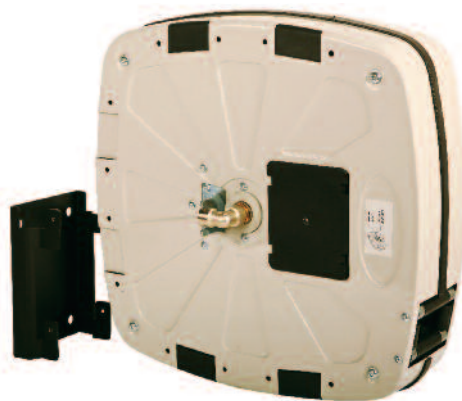


Mounting Pattern (48003)

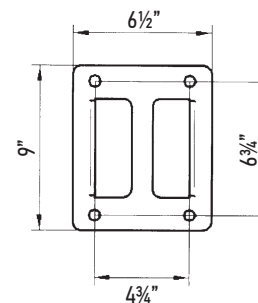


SPRING REWIND HOSE REELS – ENCLOSED DRUM – AIR/WATER

Enclosed Reel, 44002 Series:



Mounting Pattern



	P/N 44002	P/N 44002-30A	P/N 44002-50A
Working Pressure	1,160 PSI	300 PSI	300 PSI
Hose Length	—	30 ft.	50 ft.
Hose Dia., ID	—	3/8"	3/8"
Inlet Connection	1/2" NPTF	1/2" NPTF	1/2" NPTF
Outlet Connection	1/2" NPTF	3/8" NPTM	3/8" NPTM
3/8" Max. Winding Capacity	60 ft.	—	—
Connecting Hose Length	—	2 ft.	2 ft.
Shipping Weight, lb.	39	46	49