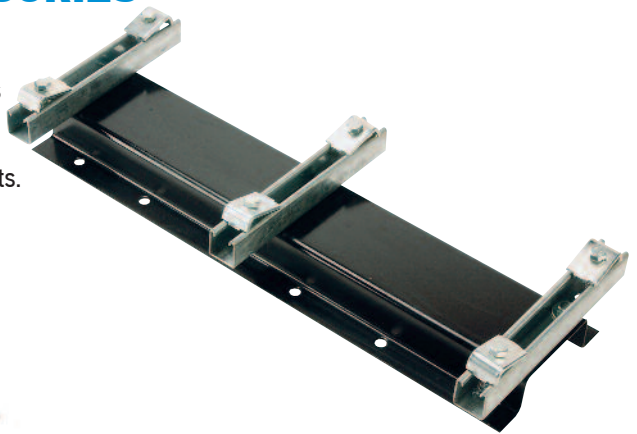


REEL ACCESSORIES

Hose Reel Mounting Channel Kit

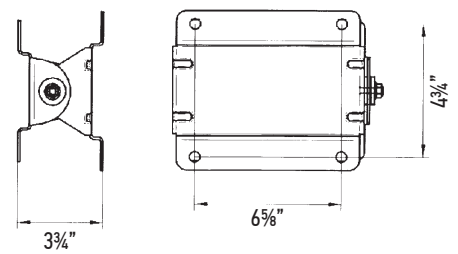
Reel mounting kits secure the 43002, 43003 and 44002 reels to "I" beams without having to drill any holes. Will fit "I" beams with flanges up to 7" wide. Kits are available for mounting 1 to 3 reels. For reel banks over 3 reels, use multiple channels, i.e. for 6 reel bank, use two 950043 reel kits.



- P/N **950041** 1 Reel Mounting Kit
- P/N **950042** 2 Reel Mounting Kit
- P/N **950043** 3 Reel Mounting Kit

Swivel Mount Kit

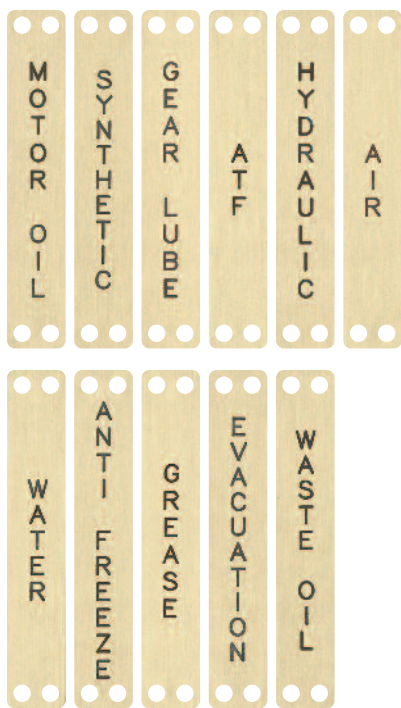
P/N **950091**
Swivel mount bracket adapts rigid mount open and enclosed reels to swivel mount, for P/N 43002, 43003 and 44002 series reels.



Product Service Labels

Product service labels (3/4" x 4 1/4") are used to identify type of product being dispensed from a reel, control handle or meter. Labels are engraved brass for durability and provided with mounting hardware for the specific product label listed.

- P/N **902010** Motor Oil
- P/N **902011** Synthetic Oil
- P/N **902012** Gear Lube
- P/N **902013** ATF
- P/N **902014** Hydraulic Oil
- P/N **902015** Air
- P/N **902016** Water
- P/N **902017** Antifreeze
- P/N **902018** Grease
- P/N **902019** Evacuation
- P/N **902020** Waste Oil



Note: Custom labels are available upon request. Please call for availability.

P/N **42015**

Wall mounted drip tray. Used to retain control handle and catch the occasional drip. Catch tray is easily removed for cleaning. 6" wide x 6 1/2" deep x 27" tall.

