



LIQUIDYNAMICS™

MOBILE USED OIL DRAIN

Instruction & Parts Manual

Model 24176



! WARNING

These oil drains are not for use with flammable, explosive or corrosive products such as gasoline, diesel fuel or chemicals.

This manual contains important warnings and information. READ AND KEEP FOR REFERENCE.

2311 S. Edwards • Wichita, KS 67213
TEL: 316-943-5477 • FAX: 316-943-4760
TOLL FREE: 800-894-3572
E-MAIL: productinfo@liquidynamics.com
- or - orderdesk@liquidynamics.com

! WARNING

This symbol indicates a potentially hazardous situation which, if not avoided, may result in death or serious injury.

Introduction:

The model 24176 Used Oil Drain will provide years of reliable operation. It is designed to collect used oil, transmission fluid and anti-freeze in its large 21 gallon reservoir and allow easy transfer of these fluids by pressurizing the tank with approximately 10 PSI of shop air.

! WARNING

Do not use this drain with flammable, explosive or corrosive products such as Gasoline, Diesel Fuel or Chemicals. Do not do any welding on the reservoir. Do not expose the reservoir to any source of heat.

! WARNING

While draining high temperature oils, keep hands and face protected. Only use the device for the purpose for which it has been designed. Do not modify any components of the equipment. Use only original spare parts.

Assembly of Collection Bowl

Reference Fig. 1 & 3

1. Attach the collection bowl, item #3, to the swivel connection #6, and tighten the two Allen head screws.
2. Insert the filter grate #2, into the collection bowl, attach the extension funnel #1 to the collection bowl and secure with screws provided.

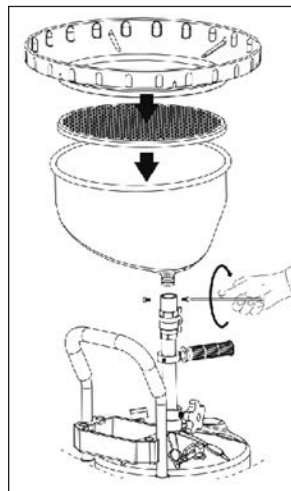


Figure 1

Operating Instructions

Reference Fig. 3

1. To Raise or Lower Drain Pan

Loosen hand knob, #17, and use the lift handle #13, to raise or lower drain pan to the desired height. Secure the drain pan height position by hand tightening hand knob #17.

! CAUTION

Never fill the container over the maximum level indicated by the sight gauge #35, located on the side of the reservoir.

! CAUTION

This symbol indicates a potentially hazardous situation which, if not avoided, may result in injury or damage to equipment.

2. Use of Drain

Position oil drain underneath vehicle engine to be drained, raise or lower drain pan to desired position. Open drain valve #8 (to allow oil to drain into reservoir) and air fill valve #19 (allows air to escape as oil fills reservoir), proceed to drain engine oil.

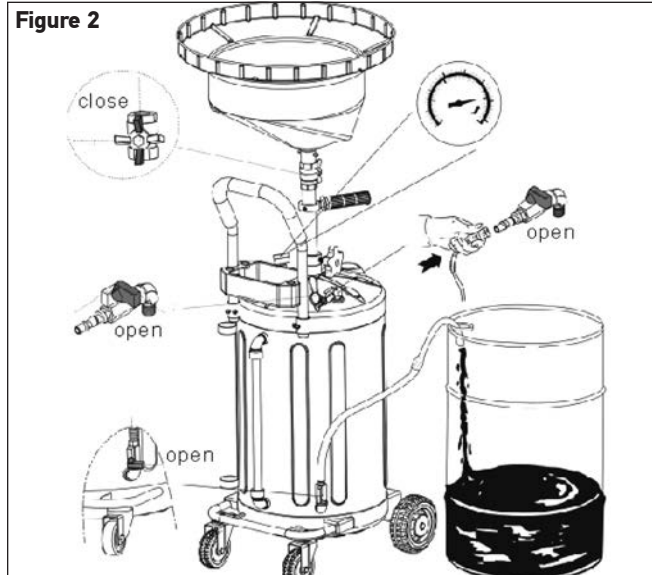


Figure 2

3. Emptying Reservoir Reference Fig. 2 & 3

- a. Close drain valve #8, remove the drip plug at the discharge end of the hose and hook the hose to a suitable receiving container.

! CAUTION

Failure to close drain valve #8 when pressurizing the reservoir will result in oil being forced up and out of the riser tube and drain pan, causing an oil spray/spill.

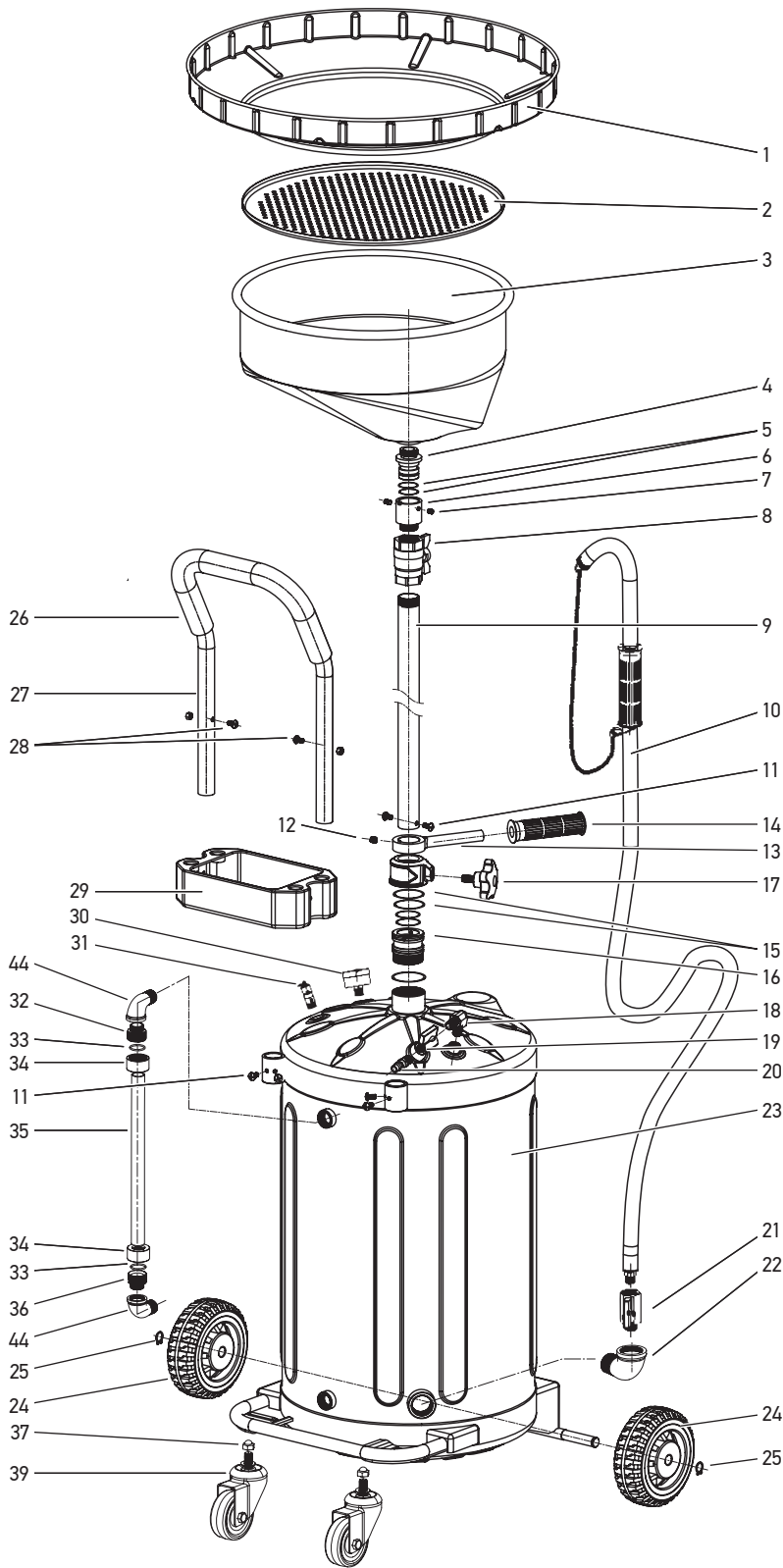
- b. Connect shop air that is regulated to 10 – 14 PSI to the quick connector #20 and open air fill valve #19 and then open drain valve #21.
- c. After fluid has been discharged from the reservoir, close drain valve #21 and reinstall drip plug at end of discharge hose.

NOTE: The Oil Drain is equipped with a pneumatic safety relief valve that is set to relieve at 14 PSI.

! WARNING

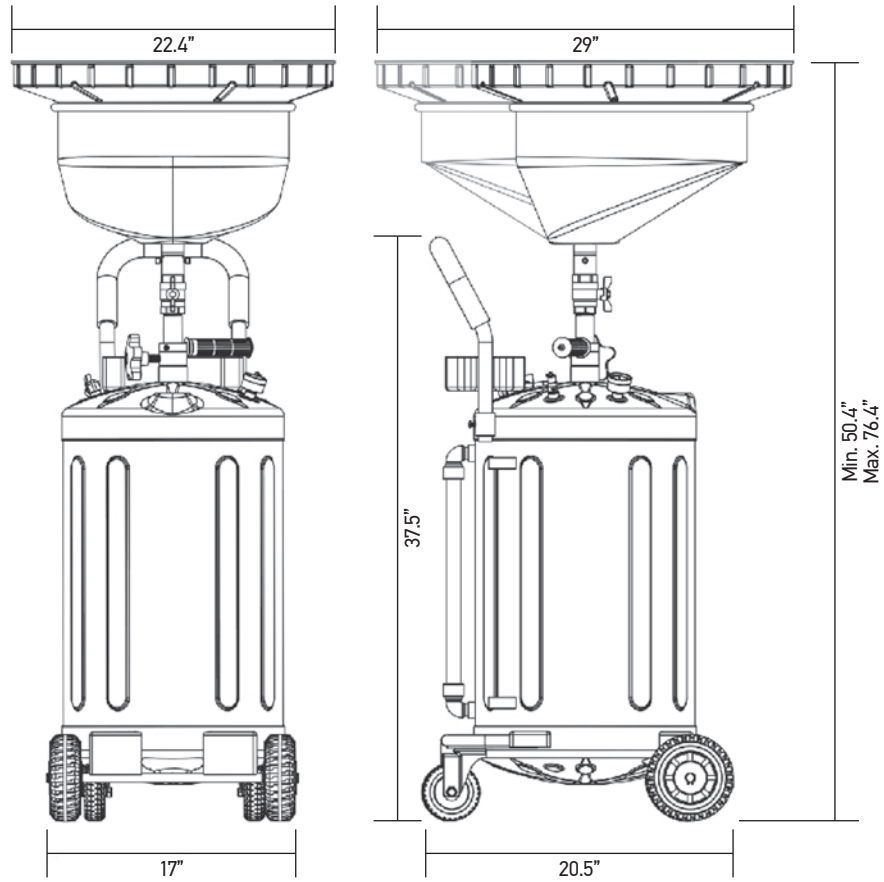
Do not connect an unregulated air supply to the oil drain since the volume of air entering the unit may exceed the ability of the relief valve to expel this air, resulting in danger of tank explosion!

Exploded Parts Items (Tank Assembly):



ITEM	PART NO.	DESCRIPTION	QTY
1	S46100-01	Extension Funnel	1
2	S46100-02	Filter Grate	1
3	S46100-03	Collection Bowl	1
4	S46100-04	Swivel Connection	1
5	S46100-05	O-ring	2
6	S46100-06	Swivel Connection	1
7	S46100-07	Nut	2
8	S46100-08	Ball Valve	1
9	S46100-09	Riser Tube	1
10	S46100-10	Drain Hose	1
11	S46100-11	Screw	6
12	S46100-12	Screw	1
13	S46100-13	Lift Handle Bar	1
14	S46100-14	Handle, Sleeve	1
15	S46100-15	O-Ring	2
16	S46100-16	Connector	1
17	S46100-17	Knob	1
18	S46100-18	Right Angle Adapter	1
19	S46100-19	Ball Valve	1
20	S46100-20	Quick Plug	1
21	S46100-21	Ball Valve	1
22	S46100-22	Adapter	1
23	S46100-23	Tank	1
24	S46100-24	Wheel	2
25	S46100-25	Retainer, Wheel	2
26	S46100-26	Handle Sleeve	1
27	S46100-27	Handle	1
28	S46100-28	Screw	2
29	S46100-29	Tool Tray	1
30	S46100-30	Gauge	1
31	S46100-31	Safety Valve	1
32	S46100-32	Level Gauge Adapter	1
33	S46100-33	O-Ring	2
34	S46100-34	Nut, Level Gauge	2
35	S46100-35	Level Gauge	1
36	S46100-36	Level Gauge Adapter	1
37	S46100-37	Nut, Acorn	2
39	S46100-39	Caster	2
44	S46100-44	Elbow	2

Figure 3



Specifications:	
Model Number	24176
Tank Capacity	21 Gallons
Collection Bowl Capacity	20 Quarts
Collection Bowl Diameter	22"
Collection Bowl Effective Dia.	29"
Maximum Working Height	76.4"
Minimum Working Height	50.4"
Discharge Hose Length	6.5'
Weight (empty)	63 lb.
Shipping Weight	69 lb.



LIQUIDYNAMICS™

2311 S. Edwards • Wichita, KS 67213 / TEL: 316-943-5477 • FAX: 316-943-4760 / TOLL FREE: 800-894-3572
 E-MAIL: productinfo@liquidynamics.com or orderdesk@liquidynamics.com / WEBSITE: www.liquidynamics.com