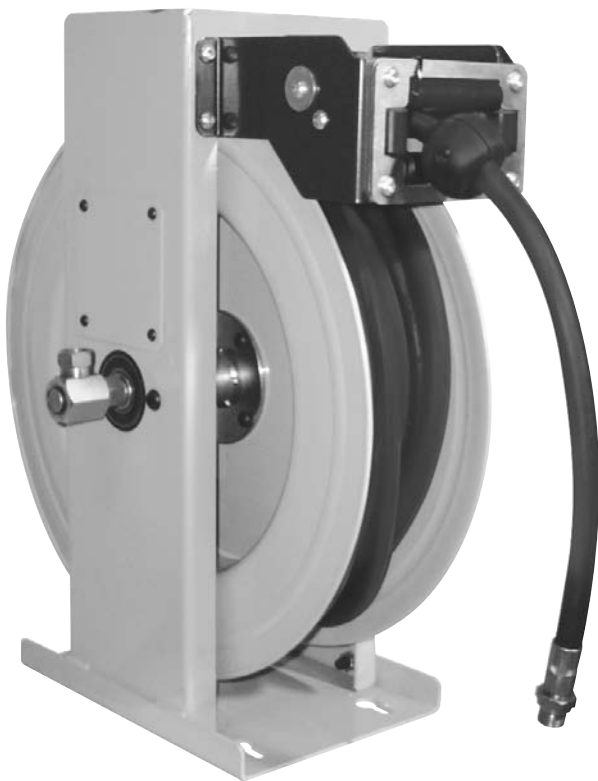


LIQUIDYNAMICS Hose Reel

Instruction & Parts Manual

Heavy Duty Air, Water and Oil Reel Model 46200
Heavy Duty Grease Reel Model 46201
Heavy Duty High Flow Reel Model 46500



P/N 46200



P/N 46500



LIQUIDYNAMICS™

2211 S. Edwards • Wichita, KS 67213
TEL: 316-943-5477 • FAX: 316-943-4760
TOLL FREE: 800-894-3572
E-MAIL: equip@liquidynamics.com

WARNING

This symbol indicates a potentially hazardous situation which, if not avoided, could result in death or serious injury.

Introduction:

These hose reels are a practical, safe, reliable and economical way to extend the useful life of hoses, maintain a safe and clean environment and significantly improve Service Technician efficiency. Typical applications are for use with air, water, engine and gear oils, hydraulic and transmission fluids, antifreeze and greases.

WARNING

Use these reels only for the purpose for which they have been designed. Do not exceed working pressure of reel or hose. Do not use these reels for flammable, explosive or corrosive applications. Do not modify any components and use only original spare parts.

Note: Certain models are supplied with conductive hose and are suitable for use with flammable products such as diesel fuel.

WARNING

If this reel was provided without hose, install hose designed specifically for the purpose for which the reel was designed and follow the original manufacturers specifications for hose requirements. Use only hose rated at or above the working pressure indicated.

Note: Liquidynamics will not accept responsibility for any liability or damages resulting from the use of this product or malfunction associated with hoses not installed by Liquidynamics.

CAUTION

Insure that incoming line pressure does not exceed rated operating pressure of your model hose reel. Refer to technical specifications on page 5 for pressure ratings.

CAUTION

To avoid damage to the reel, control handle or meter, always hold onto hose while it is rewinding.

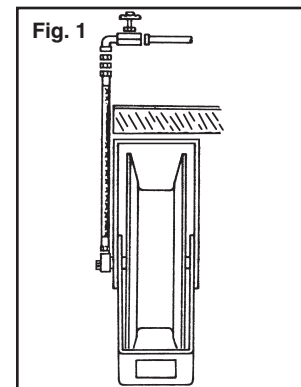
CAUTION

This symbol indicates a potentially hazardous situation which, if not avoided, may result in injury or damage to equipment.

Before Installation:

1. Make sure mounting surface is sturdy enough to hold the weight of the hose reel and take the stress of use. If wall mounting, check both the inside and outside of wall to make sure no electrical or plumbing lines will interfere with installation.

2. It is recommended to install a supply line shut-off valve just before the connection hose between product supply line and reel, fig. 1. This allows easy maintenance of reel, hose and control valve or meter.



3. Product service labels (fig. 2) are available for ease of installation.

Consult your Liquidynamics catalog or call 800-894-3572 for specific recommendations and part numbers.

Fig. 2



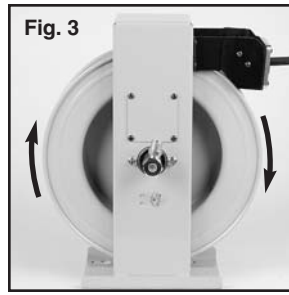
4. Flush product supply lines with generous quantities of product in order to remove air, loose dirt, scale, shavings, etc. This will prevent damage to reels, meters and control valves.

5. Determine desired orientation of reel to best fit your specific installation. Reels are shipped with guide arm in position shown in fig. 3.



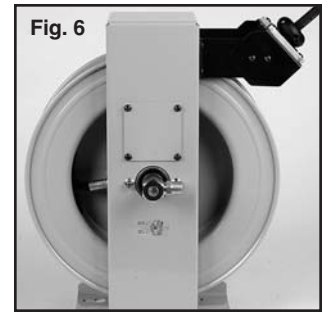
Note:

Hose spools off from reel in a clockwise direction when viewed from swivel side of reel, (fig. 3). Do not orient spool arm causing the hose to bind in a 90° orientation, (fig. 4a and 4b).

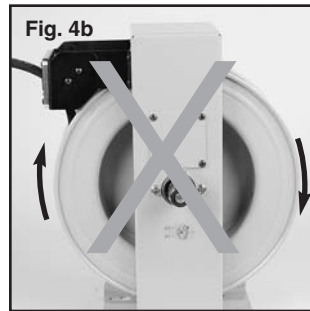


Hose Guide Re-Orientation

Depending on the location of reel installation, it may be necessary or desirable to change the orientation of the hose guide arm, fig. 6. This is easily accomplished without release of spring tension.

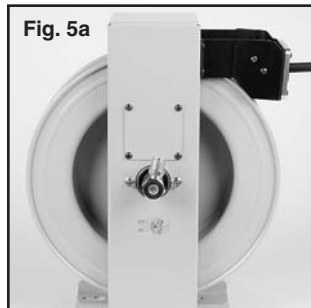


Incorrect Guide Arm Configurations



Reels may be mounted on ceiling, wall or tank (floor) as shown in fig. 5a, 5b, 5c and 5d. Refer to instructions that follow to reposition guide arm.

Possible Hose Guide Configurations



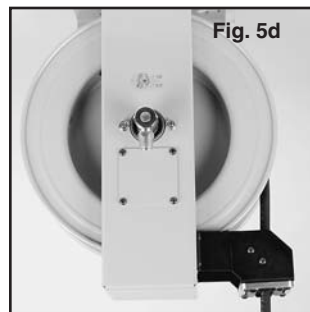
Tank or floor mount, as supplied by Liquidynamics.



Tank, floor or wall mount.



Ceiling or wall mount.



Ceiling mount.

Possible guide arm orientations are shown in fig. 5, where 5a is the “normal” position as supplied by Liquidynamics.

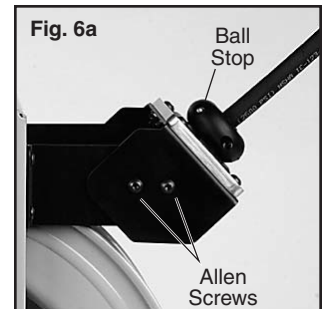
Fig. 5a; used for wall, floor and tank mounting

Fig. 5b; used for wall, floor and tank mounting

Fig. 5c; used for ceiling or wall mount

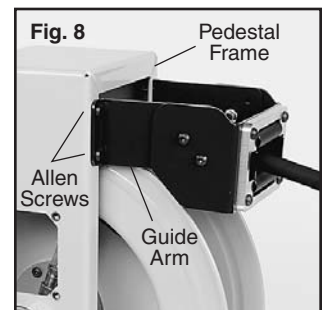
Fig. 5d; used for ceiling mount

1. Pull hose from reel until latch key is engaged to prevent hose retraction.
2. Remove ball stop by removing 2 ea. 5 mm Allen head screws (models 46200 & 46201), 2 ea. 6 mm Allen screws on model 46500, fig. 6a.

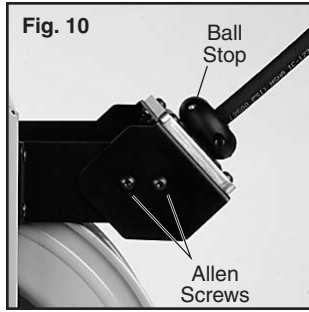
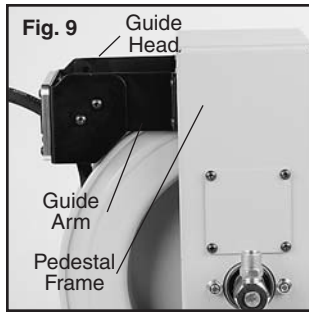


Re-position guide arm as shown in fig. 5 as follows:

1. For position 5b
 - a.) Remove 4 ea. 5 mm Allen screws holding guide head to guide arm, fig. 7.
 - b.) Rotate guide head to 45° position shown in fig. 5b.
 - c.) Reinstall 4 ea. 5 mm Allen screws securely.
 - d.) Reinstall ball stop at desired location on hose.
2. For position 5c or 5d
 - a.) Remove 4 ea. 5 mm Allen screws holding guide arm to pedestal frame, fig. 8



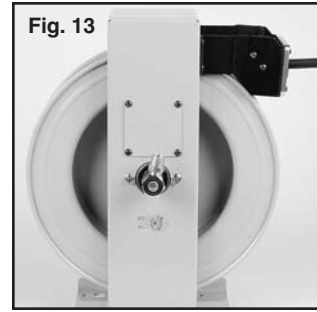
- b.) Relocate guide arm to opposite side of pedestal frame and reinstall 4 ea. Allen screws securely, Fig.9
- c.) Remove 4 ea. 5 mm Allen screws holding guide head to guide arm and reposition to position 5c or 5d as desired.
- d.) Reinstall 4 ea. 5 mm Allen screws securely.
- e.) Reinstall ball stop at desired location on hose, Fig 10.



Installing Hose

Note: Use an appropriately pressure rated thread sealant such as Loctite 545 on all hose connections to ensure a leak free connection. Allow thread sealant to cure a minimum of six hours before pressurizing system.

1. Insert hose end with swivel connector through hose guide and attach to hose reel outlet fitting, fig. 12. Tighten swivel connector of hose using 1/2" open end wrench.
2. Wind hose onto reel by turning hose drum counterclockwise (as viewed from swivel side) until full length of hose is threaded onto reel, fig. 13
3. Turn reel an additional two turns to "tension" reel.
4. Thread discharge end of hose through hose guide and attach ball stop at desired position, fig. 10.



CAUTION

Use apposing wrenches as shown in fig. 11 when attaching the jumper hose to prevent excessive side loading on the swivel joint. Using a single wrench could cause seal or joint damage.

Connecting Jumper Hose

Note: Use an appropriately pressure rated thread sealant such as Loctite 545 on all hose connections to ensure a leak free connection, Fig.11. Allow thread sealant to cure a minimum of six hours before pressurizing system.



1. Liquidynamics hose reels are provided with a 2 ft. connecting hose. Attach "rigid" end of hose to swivel as shown, fig. 11.

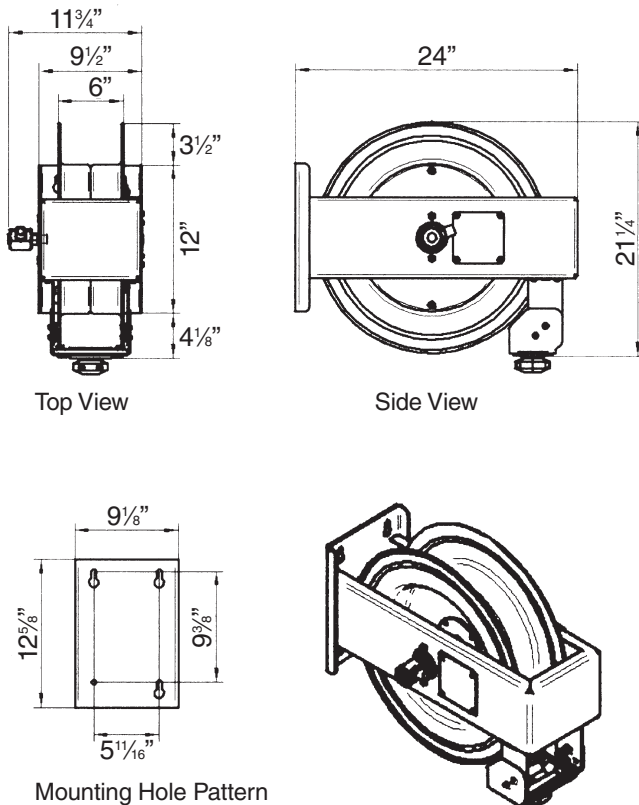
CAUTION

Do not exceed 4 turns past point all hose is wrapped onto reel, as this may cause spring damage.

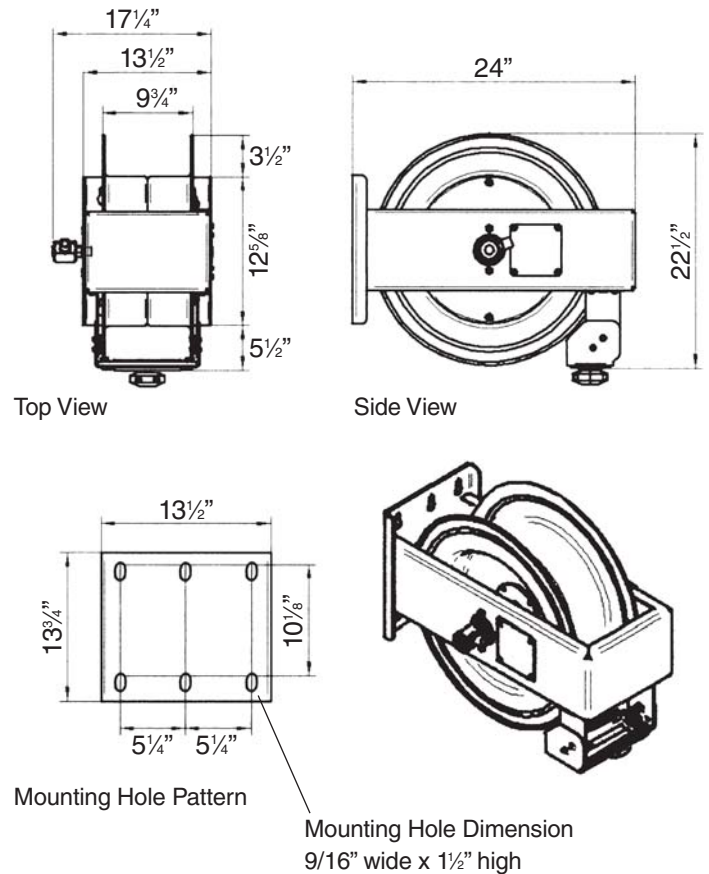
Technical Specifications:

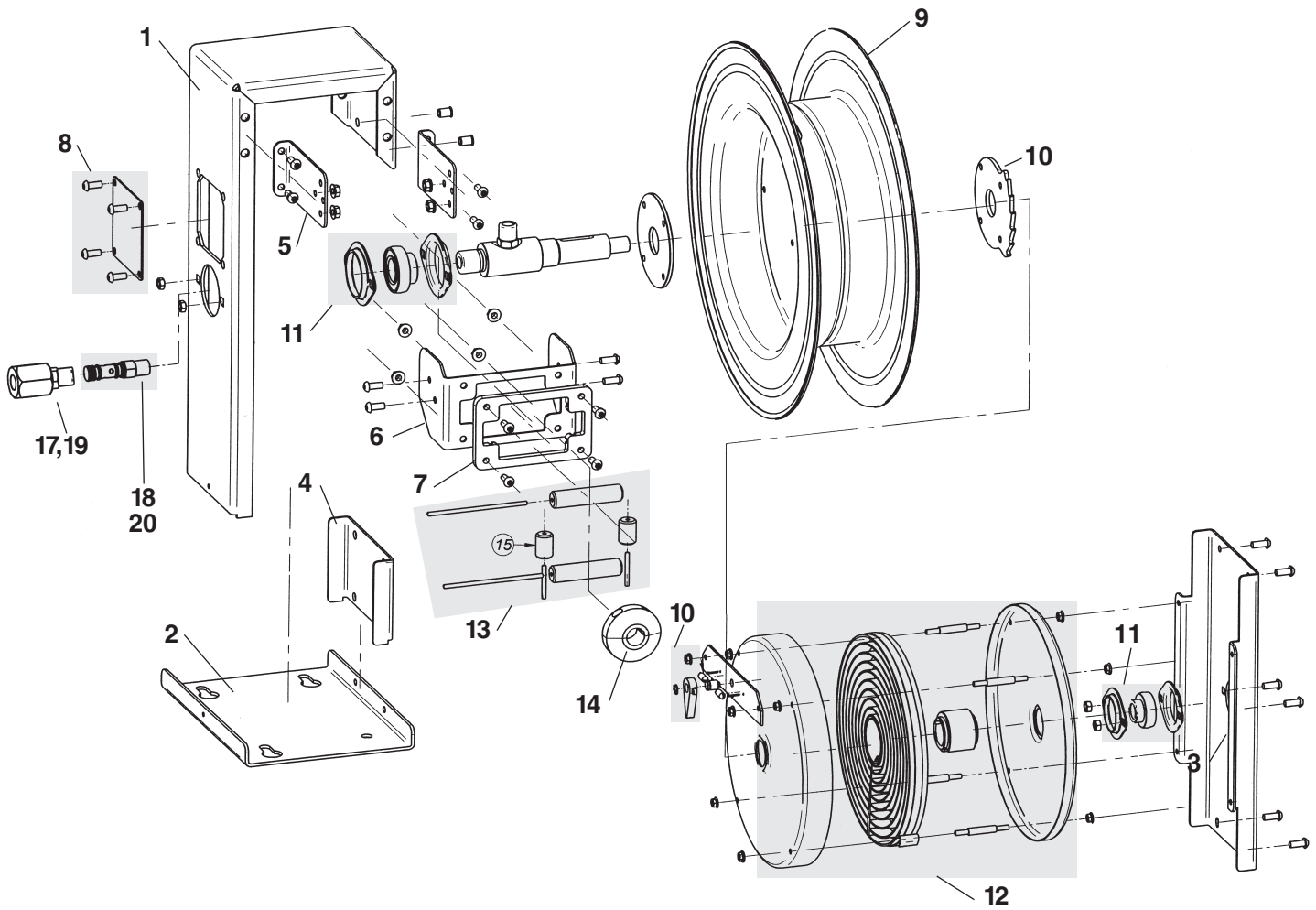
Model	Working Pressure	Hose ID	Hose Length	Inlet Connection	Outlet Connection	Maximum Winding Capacity					Shipping Weight
						1/4"	3/8"	1/2"	3/4"	1"	
46200	1,160	—	—	1/2" NPTF	1/2" NPTF	75'	75'	75'	—	—	66 lb
46200-50A	300	1/2"	50'	1/2" NPTF	1/2" NPTM	—	—	—	—	—	76 lb
46200-75A	300	1/2"	75'	1/2" NPTF	1/2" NPTM	—	—	—	—	—	81 lb
46200-50L	1,160	1/2"	50'	1/2" NPTF	1/2" NPTM	—	—	—	—	—	81 lb
46200-75L	1,160	1/2"	75'	1/2" NPTF	1/2" NPTM	—	—	—	—	—	81 lb
46201	8,700	—	—	1/4" NPTF	1/4" NPTF	75'	75'	—	—	—	66 lb
46201-50G	4,500	1/4"	50'	1/4" NPTF	1/4" NPTM	—	—	—	—	—	79 lb
46201-75G	4,500	1/4"	75'	1/4" NPTF	1/4" NPTM	—	—	—	—	—	84 lb
46202-50G	4,500	3/8"	50'	3/8" NPTF	3/8" NPTM	—	—	—	—	—	89 lb
46200-75G	4,500	3/8"	75'	3/8" NPTF	3/8" NPTM	—	—	—	—	—	89 lb
46500	870	—	—	1" NPTF	1" NPTF	—	—	—	50'	40'	110 lb
46501-50L	870	3/4"	50'	1" NPTF	3/4" NPTM	—	—	—	—	—	132 lb
46502-40L	870	1"	40'	1" NPTF	1" NPTM	—	—	—	—	—	135 lb
46504-25D	150	3/4"	25'	1" NPTF	3/4" NPTM	—	—	—	—	—	122 lb
46504-50D	150	3/4"	50'	1" NPTF	3/4" NPTM	—	—	—	—	—	132 lb
46505-25D	150	1"	1"	1" NPTF	1" NPTM	—	—	—	—	—	128 lb
46505-40D	150	1"	1"	1" NPTF	1" NPTM	—	—	—	—	—	135 lb

Model 46200 Series Reels



Model 46500 Series Reels

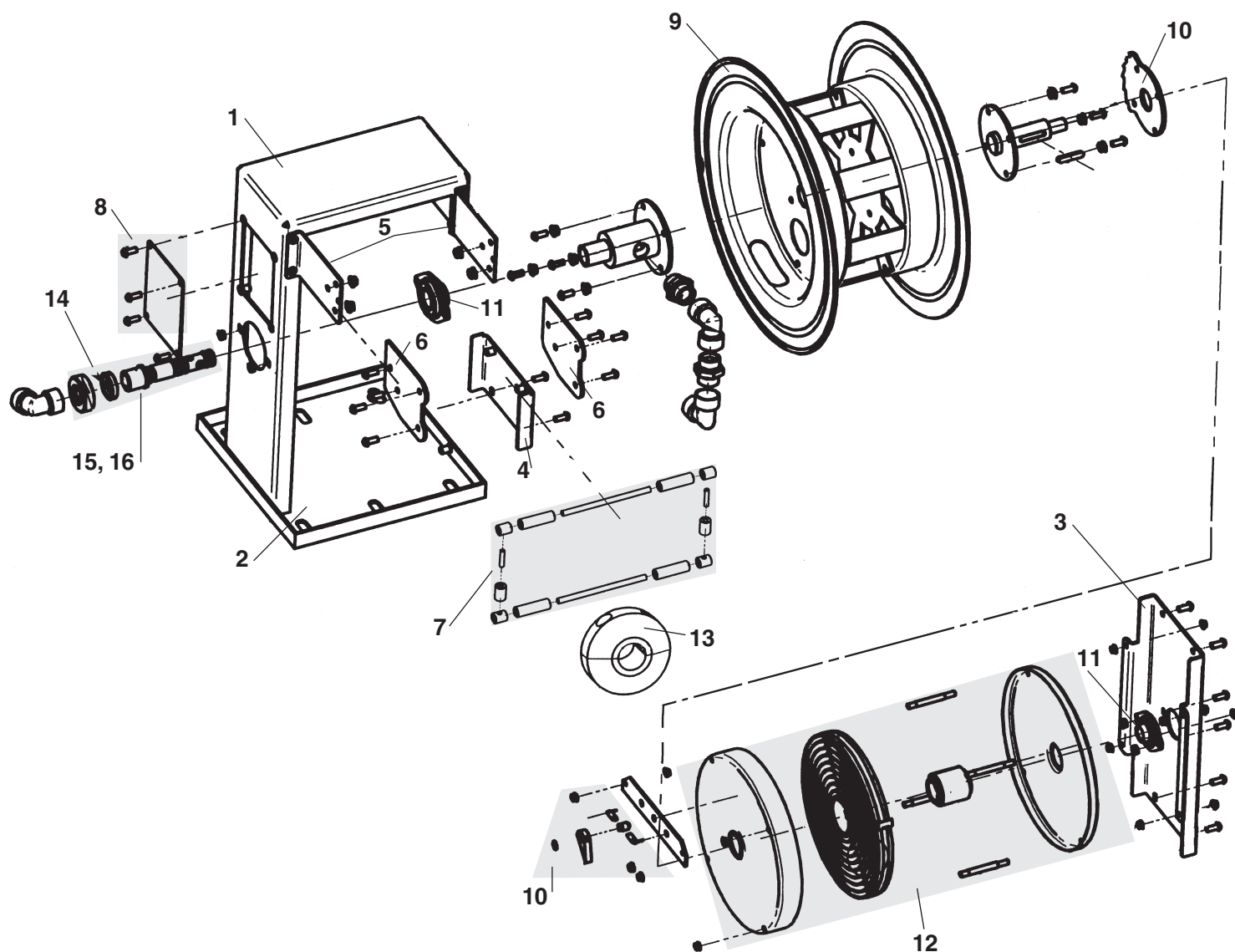




Exploded Parts Items – Model 46200 Series:

1. S46120	Frame, Upper
2. S46122	Frame, Lower
3. S46123	Side Panel, Upper
4. S46124	Side Panel, Lower
5. S46125	Guide Arm
6. S46126	Guide Head
7. S46127	Guide Head Frame
8. S46128	Access Panel, w/screws
9. S46129	Drum, Hose
10. S46130	Ratchet Comb Pawl Kit

11. S46131	Drum Bearing Kit
12. S45102	Spring Canister Kit, 75'
13. S46132	Kit, Roller Guide
14. S45007	Hose Stop Kit, 1/4", 3/8", 1/2" Hose
17. S46114	Swivel Assy. W/seals (1/2" medium pressure, oil)
18. S45051	Seal Kit, Swivel, Oil (seals only)
19. S46115	Swivel Assy. W/seals, Grease (3/8" high pressure)
20. S46117	Seal Kit, Swivel, Grease (seals only)



Exploded Parts Items – Model 46500 Series:

1. S46150	Frame, Upper	9. S46157	Hose Drum
2. S46151	Frame, Lower	10. S46130	Ratchet, Comb Pawl Kit
3. S46152	Side Panel, Upper	11. S46131	Drum Bearing Kit
4. S46153	Side Panel, Lower	12. S46158	Spring Canister Kit
5. S46154	Guide Arm, Rear	13. S46159	Hose Stop Kit, 3/4" & 1"
6. S46155	Guide Arm, Front	14. S46160	Inlet Fitting, 1" NPTF Elbow
7. S46156	Kit, Roller Guide	15. S46161	Swivel Assy. w/seals
8. S46128	Access Panel, w/screws	16. S46162	Seal Kit, Swivel



LIQUIDDYNAMICS™

2211 S. Edwards • Wichita, KS 67213 / TEL: 316-943-5477 • FAX: 316-943-4760 / TOLL FREE: 800-894-3572
E-MAIL: productinfo@liquidynamics.com / WEBSITE: www.liquidynamics.com