



LIQUIDYNAMICS™

# **LARGE CAPACITY SPRING REWIND HOSE REEL**

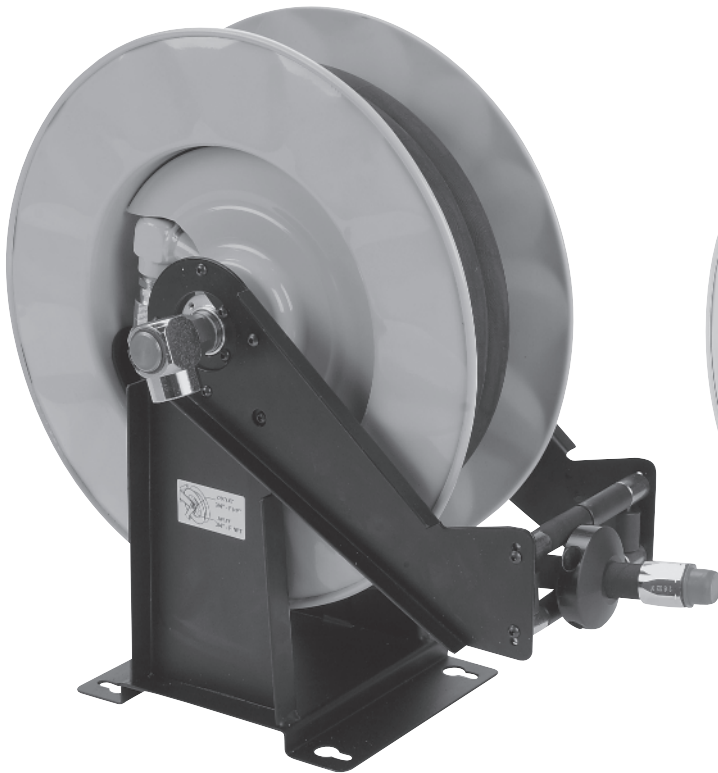
## **Instruction & Parts Manual**

**Model 88402 – 3/4" Hose Capacity**

**Model 88402DEF – 3/4" Hose Capacity**

**Model 88403 – 1/2" Hose Capacity**

**Model 88405 – 1" Hose Capacity**



**P/N 88403-75L**



**P/N 88405-40L**

**This manual contains important warnings and  
information. READ AND KEEP FOR REFERENCE.**

2311 S. Edwards • Wichita, KS 67213  
TEL: 316-943-5477 • FAX: 316-943-4760  
TOLL FREE: 800-894-3572  
E-MAIL: [productinfo@liquidynamics.com](mailto:productinfo@liquidynamics.com)  
- or - [orderdesk@liquidynamics.com](mailto:orderdesk@liquidynamics.com)

# **WARNING**

**This symbol indicates a potentially hazardous situation which, if not avoided, could result in death or serious injury.**

## **Introduction:**

These hose reels are a practical, safe, reliable and economical way to extend the useful life of hoses, maintain a safe and clean environment and significantly improve Service Technician efficiency. Typical applications are for use with air, water, engine and gear oils, hydraulic and transmission fluids, antifreeze and diesel fuel.

# **WARNING**

Use these reels only for the purpose for which they have been designed. Do not exceed working pressure of reel or hose. Do not use these reels for flammable, explosive or corrosive applications. Do not modify any components and use only original spare parts.

**Note:** Certain models are supplied with conductive hose and are suitable for use with flammable products such as diesel fuel.

# **WARNING**

If this reel was provided without hose, install hose designed specifically for the purpose for which the reel was designed and follow the original manufacturers specifications for hose requirements. Use only hose rated at or above the working pressure indicated.

**Note:** Liquidynamics will not accept responsibility for any liability or damages resulting from the use of this product or malfunction associated with hoses not installed by Liquidynamics.

# **CAUTION**

Insure that incoming line pressure does not exceed rated operating pressure of your model hose reel. Refer to technical specifications on page 5 for pressure ratings.

# **CAUTION**

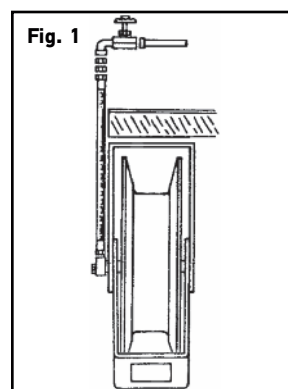
To avoid damage to the reel, control handle or meter, always hold onto hose while it is rewinding.

# **CAUTION**

**This symbol indicates a potentially hazardous situation which, if not avoided, may result in injury or damage to equipment.**

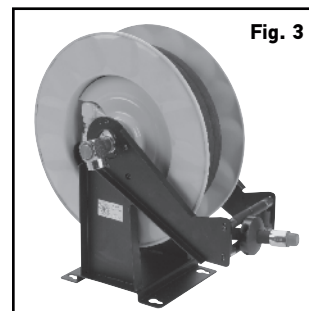
## **Before Installation:**

1. Make sure mounting surface is sturdy enough to hold the weight of the hose reel and take the stress of use. If wall mounting, check both the inside and outside of wall to make sure no electrical or plumbing lines will interfere with installation.
2. It is recommended to install a supply line shut-off valve just before the connection hose between product supply line and reel, fig. 1. This allows easy maintenance of reel, hose and control valve or meter.
3. Product service labels (fig. 2) are available for ease of installation. Consult your Liquidynamics catalog or call 800-894-3572 for specific recommendations and part numbers.
4. Flush product supply lines with generous quantities of product in order to remove air, loose dirt, scale, shavings, etc. This will prevent damage to reels, meters and control valves.
5. Determine desired orientation of reel to best fit your specific installation. Reels are shipped with guide arm in position shown in fig. 3.



**Fig. 1**

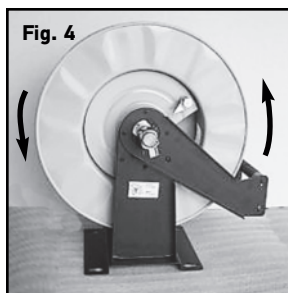
**Fig. 2**



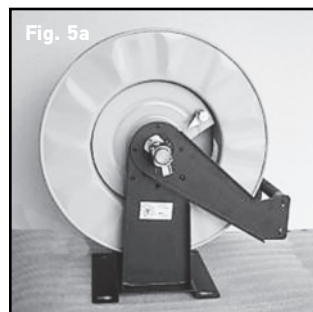
**Fig. 3**

**Note:**

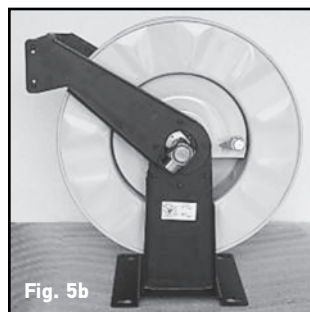
Hose spools off from reel in a counterclockwise direction when viewed from swivel side of reel, (fig. 4).



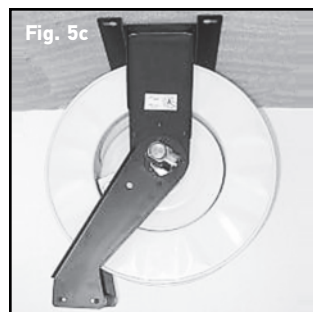
Reels may be mounted on ceiling, wall or tank (floor) as shown in fig. 5a, 5b and 5c. Refer to instructions that follow to reposition guide arm.

**Possible Hose Guide Configurations**

Tank or floor mount, as supplied by Liquidynamics.



Alternate tank or floor mount.



Ceiling mount.

**Hose Guide Re-Orientation**

Depending on the location of reel installation, it may be necessary or desirable to change the orientation of the hose guide arm, fig. 6. This is easily accomplished without release of spring tension. Possible guide arm orientations are shown in fig. 5, where 5a is the "normal" position as supplied by Liquidynamics.

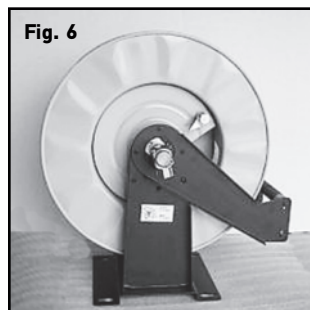
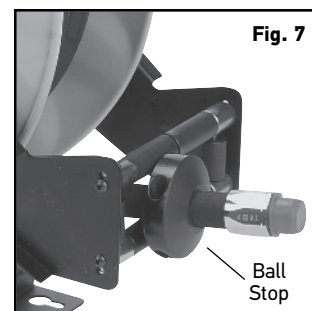


Fig. 5a; used for wall, floor and tank mounting

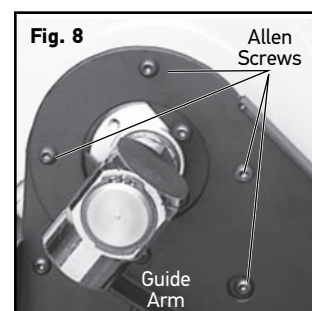
Fig. 5b; used for wall, floor and tank mounting

Fig. 5c; used for ceiling or wall mount

1. Pull hose from reel until latch key is engaged to prevent hose retraction.
2. Remove ball stop by removing 2 ea. Allen head screws, fig. 7.

**Re-position guide arm as shown in fig. 5 as follows:**

1. For position 5b
  - a.) Remove 4 ea. 4 mm Allen screws on each side of guide arm, fig. 8.
  - b.) Rotate guide arm to 180° to position shown in fig. 5b.
  - c.) Reinstall 8 ea. 4 mm Allen screws securely.
  - d.) Reinstall ball stop at desired location on hose.
2. For position 5c
  - a.) Remove 4 ea. 4 mm Allen screws on each side of guide arm, fig. 8
  - b.) Rotate guide arm 90° to position shown in fig. 5c.
  - c.) Reinstall 8 ea. 4 mm Allen screws securely.
  - d.) Reinstall ball stop at desired location on hose, Fig 7.

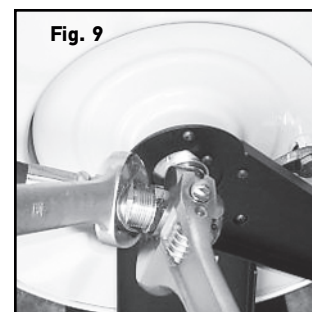


**CAUTION**

Use apposing wrenches as shown in fig. 9 when attaching the jumper hose to prevent excessive side loading on the swivel joint. Using a single wrench could cause seal or joint damage.

**Connecting Jumper Hose**

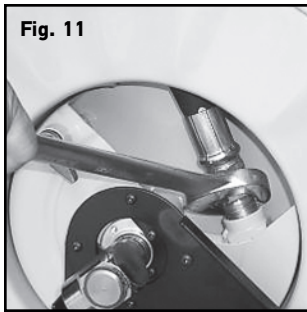
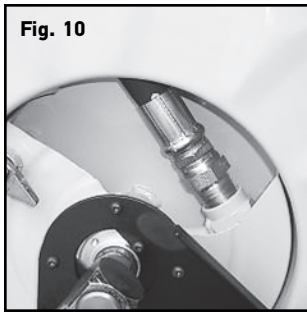
Note: Use an appropriately pressure rated thread sealant such as Loctite 545 on all hose connections to ensure a leak free connection, Fig. 9. Allow thread sealant to cure a minimum of six hours before pressurizing system.



## Installing Hose

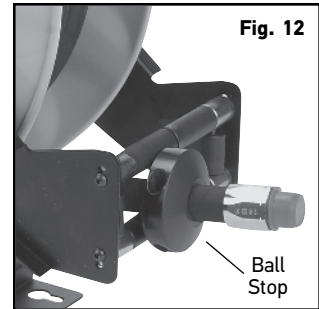
Note: Use an appropriately pressure rated thread sealant such as Loctite 545 on all hose connections to ensure a leak free connection. Allow thread sealant to cure a minimum of six hours before pressurizing system.

1. Insert hose end with swivel connector through hose guide and attach to hose reel outlet fitting, fig. 10. Tighten swivel connector using open end wrench, fig. 11.



2. Wind hose onto reel by turning hose drum clockwise (as viewed from swivel side) until full length of hose is threaded onto reel.

3. Tension spring by turning hose drum nine full turns counterclockwise for the 88402 and 88403 reels. Turn hose drum five full turns counterclockwise for the 88405 reel.
4. Thread discharge end of hose through hose guide and attach ball stop at desired position, fig. 12.



Note: Hose tension may be increased or decreased by using more or less turns as indicated in step #3 above.

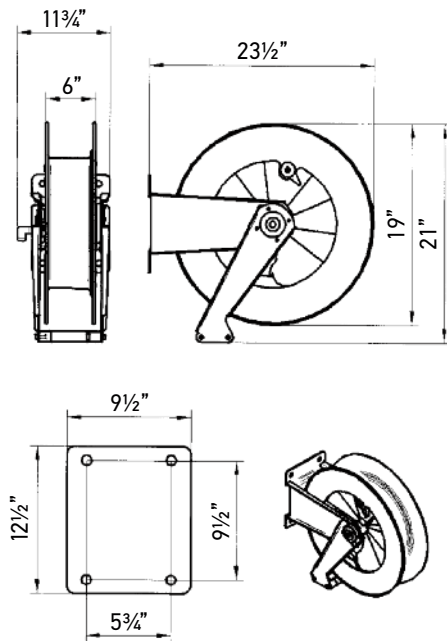
## CAUTION

Do not exceed 4 turns past point all hose is wrapped onto reel, as this may cause spring damage.

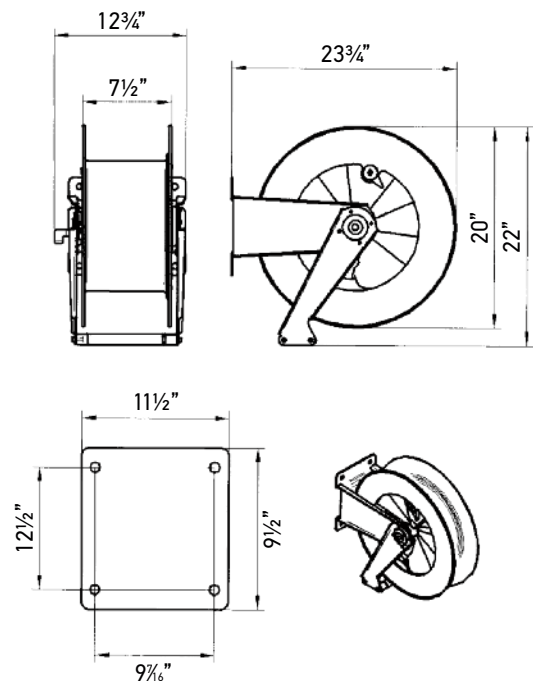
## Technical Specifications:

Model	Working Pressure	Hose Dia. ID	Hose Length	Inlet Connection	Outlet Connection	Max Winding Capacity	Connecting Hose Length	Shipping Weight
<b>88402</b>	870 PSI	—	—	3/4" NPTF	3/4" NPTF	3/4" x 50'	—	62 lb
<b>88402-40L</b>	870 PSI	3/4"	40'	3/4" NPTF	3/4" NPTF	—	Not Supplied	78 lb
<b>88402-50L</b>	870 PSI	3/4"	50'	3/4" NPTF	3/4" NPTF	—	Not Supplied	86 lb
<b>88402-40D</b>	150 PSI	3/4"	40'	3/4" NPTF	3/4" NPTF	—	Not Supplied	78 lb
<b>88402-50D</b>	150 PSI	3/4"	50'	3/4" NPTF	3/4" NPTF	—	Not Supplied	86 lb
<b>88402DEF</b>	1,160 PSI	—	—	3/4" NPTF	3/4" NPTF	3/4" x 50'	—	62 lb
<b>88402DEF-50</b>	1,160 PSI	3/4"	50'	3/4" NPTF	3/4" NPTF	—	Not Supplied	68 lb
<b>88403</b>	1,160 PSI	—	—	1/2" NPTF	1/2" NPTF	1/2" x 75'	—	62 lb
<b>88403-50L</b>	1,160 PSI	1/2"	50'	1/2" NPTF	1/2" NPTF	—	2 ft.	70 lb
<b>88403-75L</b>	1,160 PSI	1/2"	75'	1/2" NPTF	1/2" NPTF	—	2 ft.	76 lb
<b>88405</b>	870 PSI	—	—	1" NPTF	1" NPTF	1" x 40'	—	74 lb
<b>88405-30L</b>	870 PSI	1"	30'	1" NPTF	1" NPTF	—	Not Supplied	84 lb
<b>88405-40L</b>	870 PSI	1"	40'	1" NPTF	1" NPTF	—	Not Supplied	96 lb
<b>88405-30D</b>	150 PSI	1"	30'	1" NPTF	1" NPTF	—	Not Supplied	84 lb
<b>88405-40D</b>	150 PSI	1"	40'	1" NPTF	1" NPTF	—	Not Supplied	96 lb

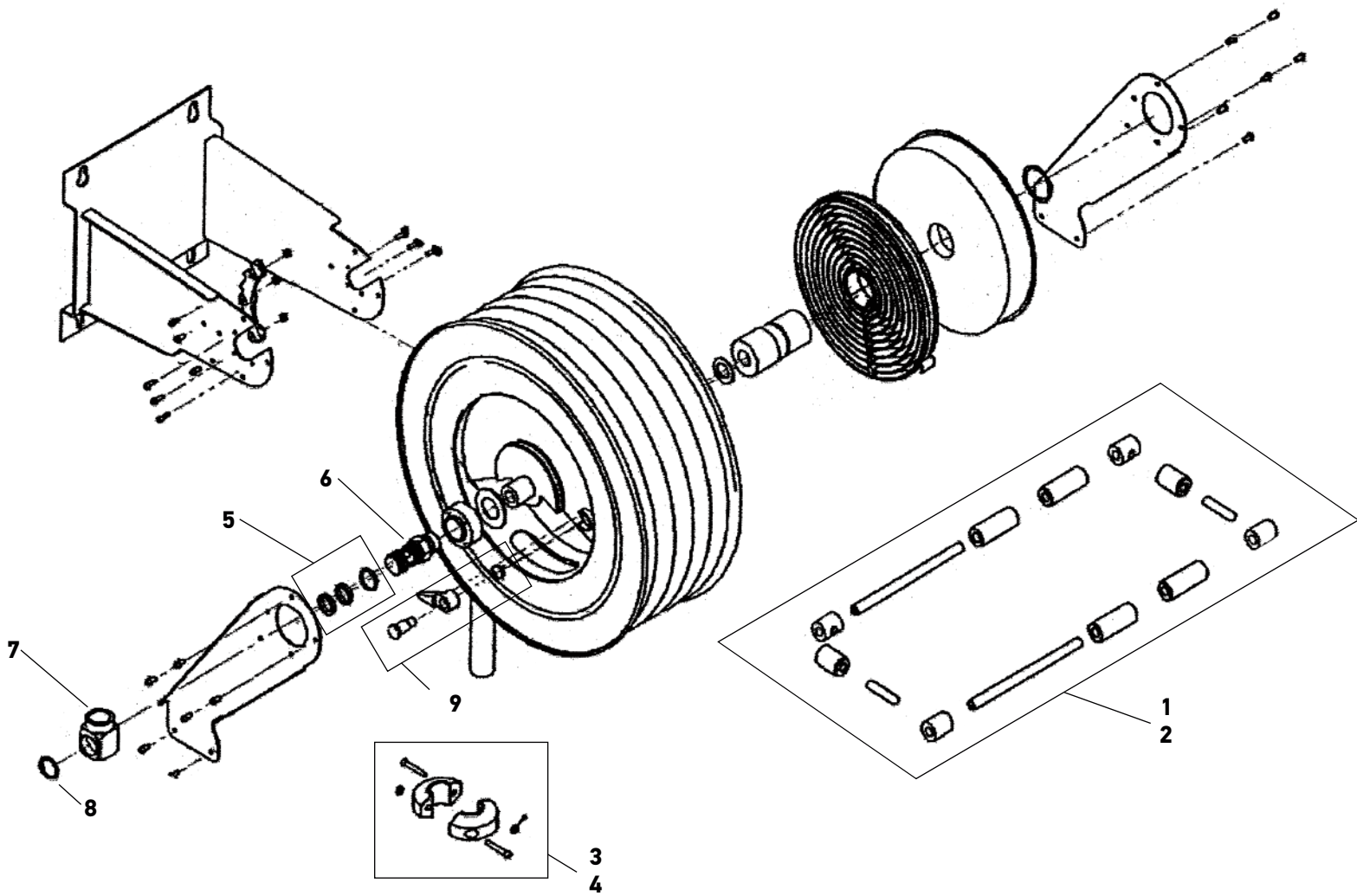
### Model 88402, 88402DEF and 88403 Series Reels



### Model 88405 Series Reels







**Exploded Parts Items –  
Model 88402, 88402DEF, 88403 and 88405 Series:**

1.	S45201	Hose Guide Kit, 88402, 88403 Reels
2.	S45202	Hose Guide Kit, 88405 Reel
3.	S45203	Hose Stop, 3/4" Hose
4.	S45204	Hose Stop, 1" Hose
5.	S45205	Seal Kit for 88402, 88403 and 88405 Reels
5A.	S45205DEF	Seal Kit for 88402DEF Reels
6.	S45206	Internal Swivel for 88402, 88403 and 88405 Reels
7.	S45207	1" Inlet Swivel for 88402, 88403 and 88405 Reels
7A.	S45207DEF	3/4" Swivel Inlet assembly for 88402DEF Reels
8.	S45208	Retaining Ring Clip for 88402, 88403 and 88405 Reels
9.	S45209	Pawl Kit, Includes pawl, stem and spring (88402, 88403 and 88405 Reels)





2311 S. Edwards • Wichita, KS 67213 / TEL: 316-943-5477 • FAX: 316-943-4760 / TOLL FREE: 800-894-3572  
E-MAIL: [productinfo@liquidynamics.com](mailto:productinfo@liquidynamics.com) or [orderdesk@liquidynamics.com](mailto:orderdesk@liquidynamics.com) / WEBSITE: [www.liquidynamics.com](http://www.liquidynamics.com)